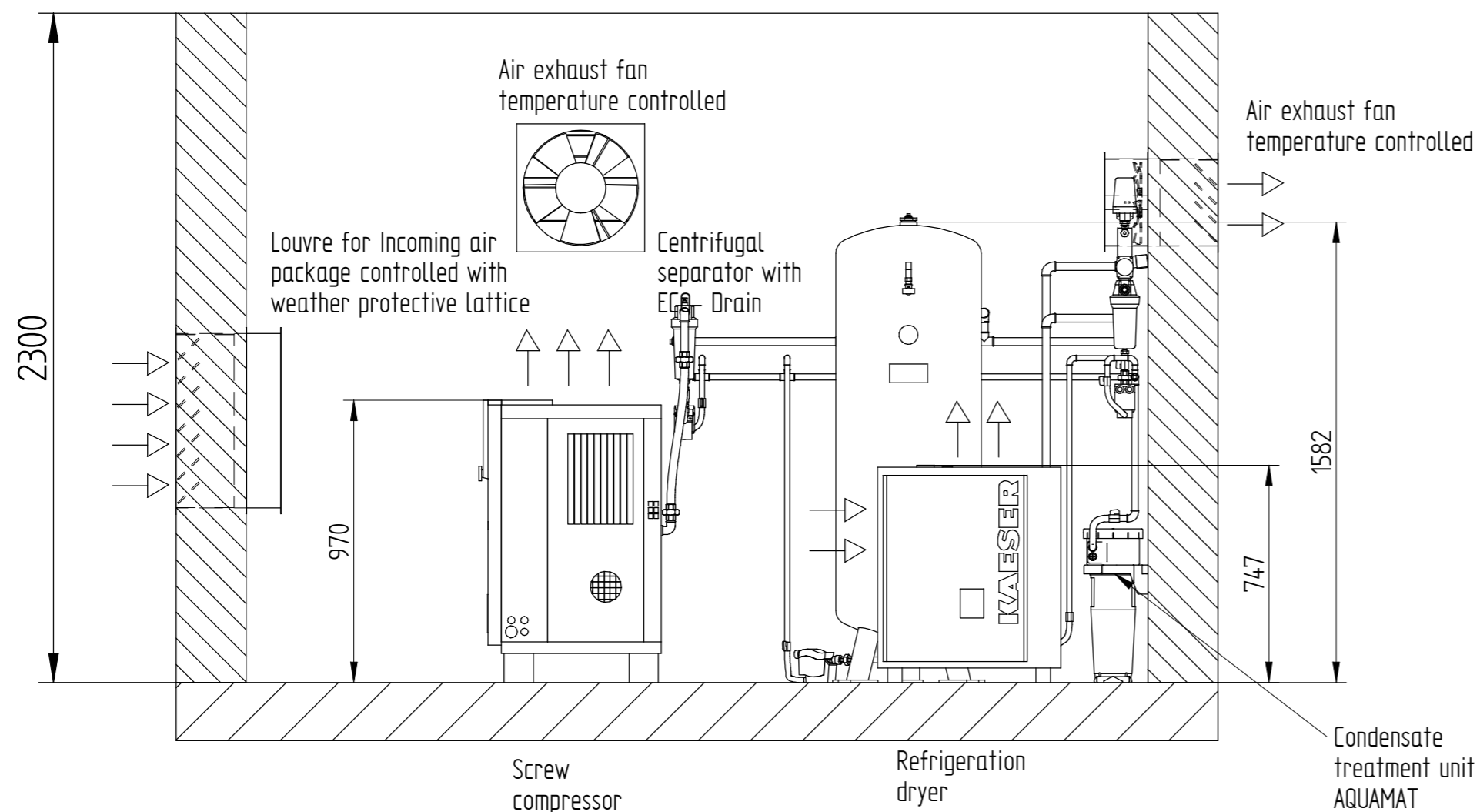
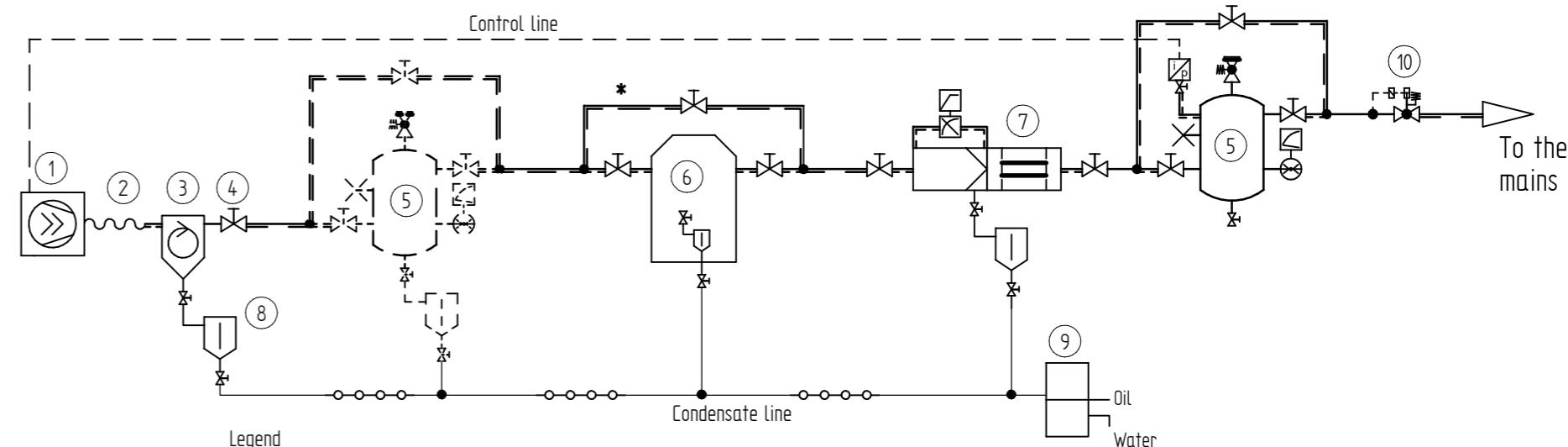
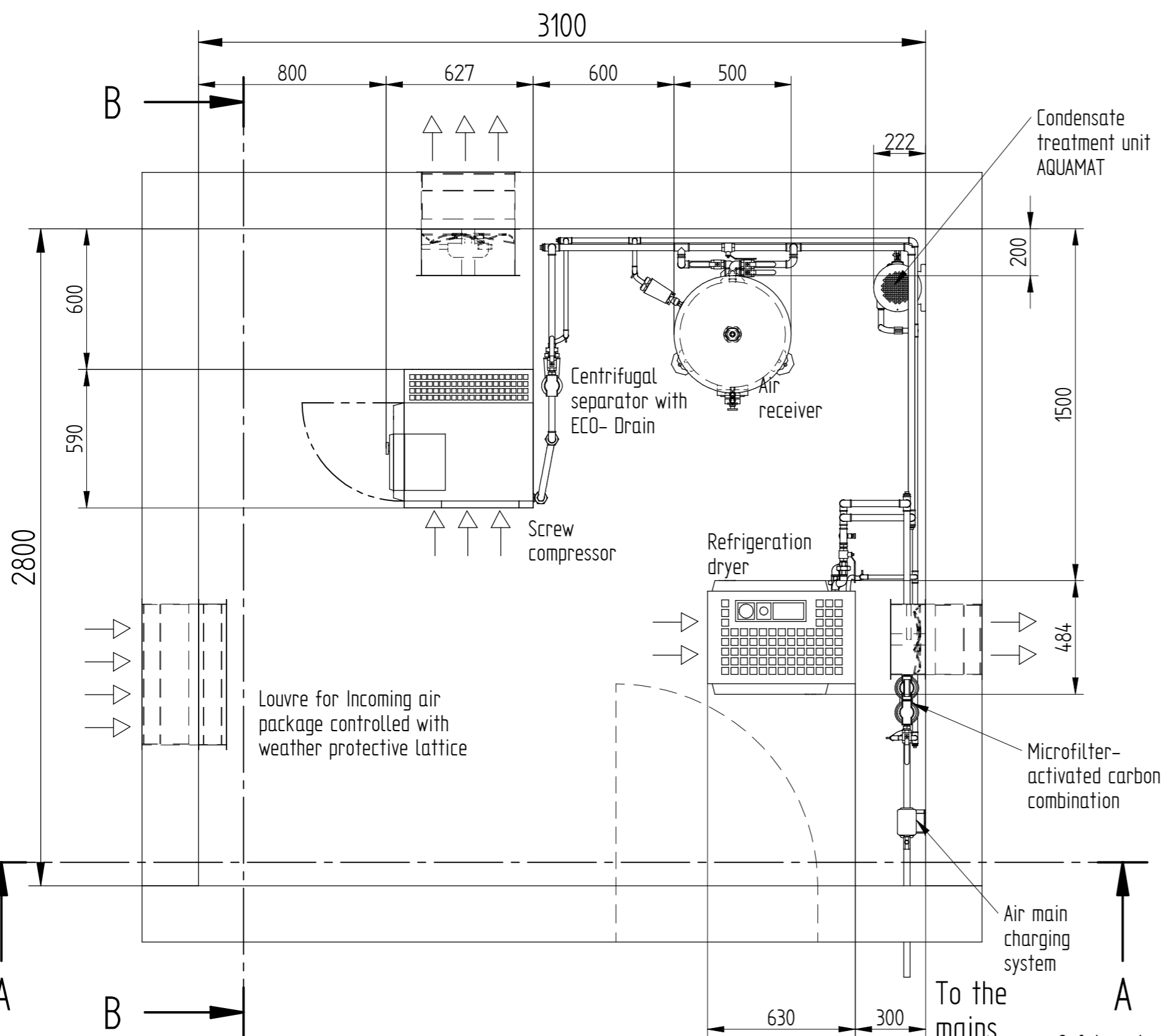
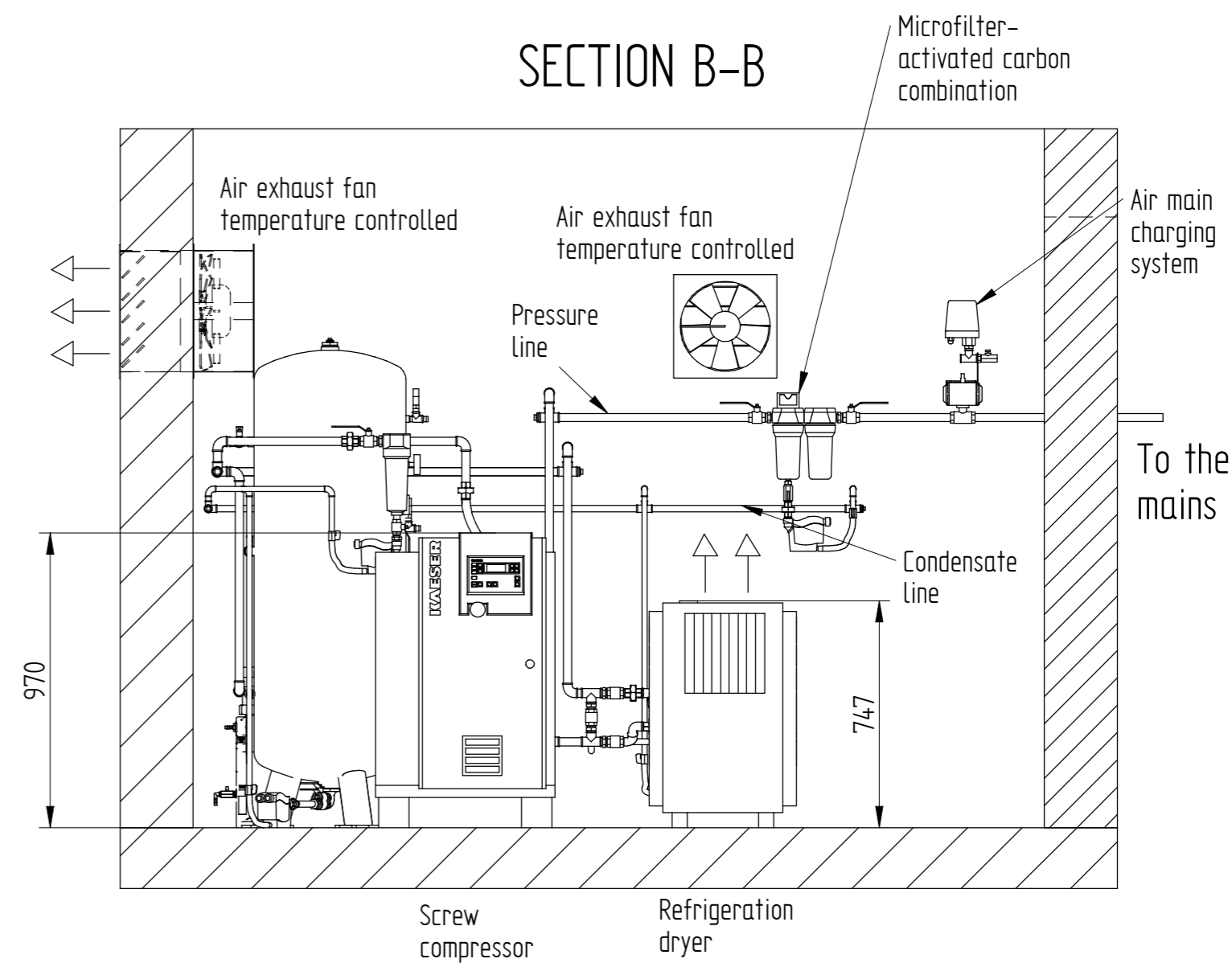


SECTION A-A



SECTION B-B



Legend

- 1 Screw compressor
- 2 Hose line
- 3 Centrifugal separator
- 4 Ball valve
- 5 Air receiver tank
- 6 Refrigeration dryer
- 7 Microfilter Activated Carbon combination
- 8 Automatic condensate drain
- 9 Condensate Treatment unit
- 10 Air main charging system

* Bypass lines should not be fitted on standby units or when 100 % compressed air quality is required.
The requirements of items 3 and 5 should be chosen according operating conditions.

Compressor-model	Compressed air connection	Air entrance aperture m ² free cross section per unit	Incoming air volume m ³ /h per unit	Air exhaust fan m ³ /h	Centrifugal separator model	Compressed air connection	ECO-DRAIN	Minimum air receiver capacity l	ECO-DRAIN	Refrigeration dryer model **	Compressed air connection	Air entrance aperture m ² free cross section per unit	Incoming air volume m ³ /h per unit	Microfilter-activated carbon combination model	Compressed air connection	Condensate treatment unit AQUAMAT
SX3	G 3/4	0,2	1200	1200	ZK 01	G 3/4	31	150	31	TA 5	G 3/4	0,1	650	FFG 6- D	R 3/8	CF 3
SX4	G 3/4	0,2	1450	1450	ZK 01	G 3/4	31	150	31	TA 5	G 3/4	0,1	650	FFG 6- D	R 3/8	CF 3
SX6	G 3/4	0,2	1800	1800	ZK 01	G 3/4	31	250	31	TA 5	G 3/4	0,1	650	FFG 6- D	R 3/8	CF 3
SX8	G 3/4	0,2	2400	2400	ZK 01	G 3/4	31	250	31	TA 8	G 3/4	0,1	650	FFG 10- D	R 3/8	CF 3

** Designed for reference terms
DIN/ ISO 7183 Option A

Ambient temperature
min.: + 3° C
max.: + 40° C

Condensate lines have to be connected to a collecting line via swan neck or are to be fed to the oil/water separator separately. A pressure-less drain has to be provided for.

This drawing also contains work to be done on site. The regulations of EN 1012 & VDE 0100 have to be observed, the requirements of existing operational safety ordinance and the manuals have to be considered by the operator and the employer respectively at the place of installation. The national safety and accident prevention regulations have to be observed.

The installation of a sub- assembly in terms of the pressure equipment directive 97/23/EC has to be carried out according to this directive.

KAESER KOMPRESSOREN	P + I	Scale	Date	Name
	Inst.	1:20	02.03.2011	Langgu1
Name: Sample Layout sketch 1x SX with exhaust air fan		Checked	02.03.2011	Ernst
Plan No. LYMU0002900e		Page 3 of 4		

Drawings remain our exclusive property. They are entrusted only for the agreed purpose. Copies or any other reproduction, including storage, treatment and dissemination by use of electronic systems must not be made for any other than the agreed purpose. Neither originals nor reproductions may be given to or made available to third parties.

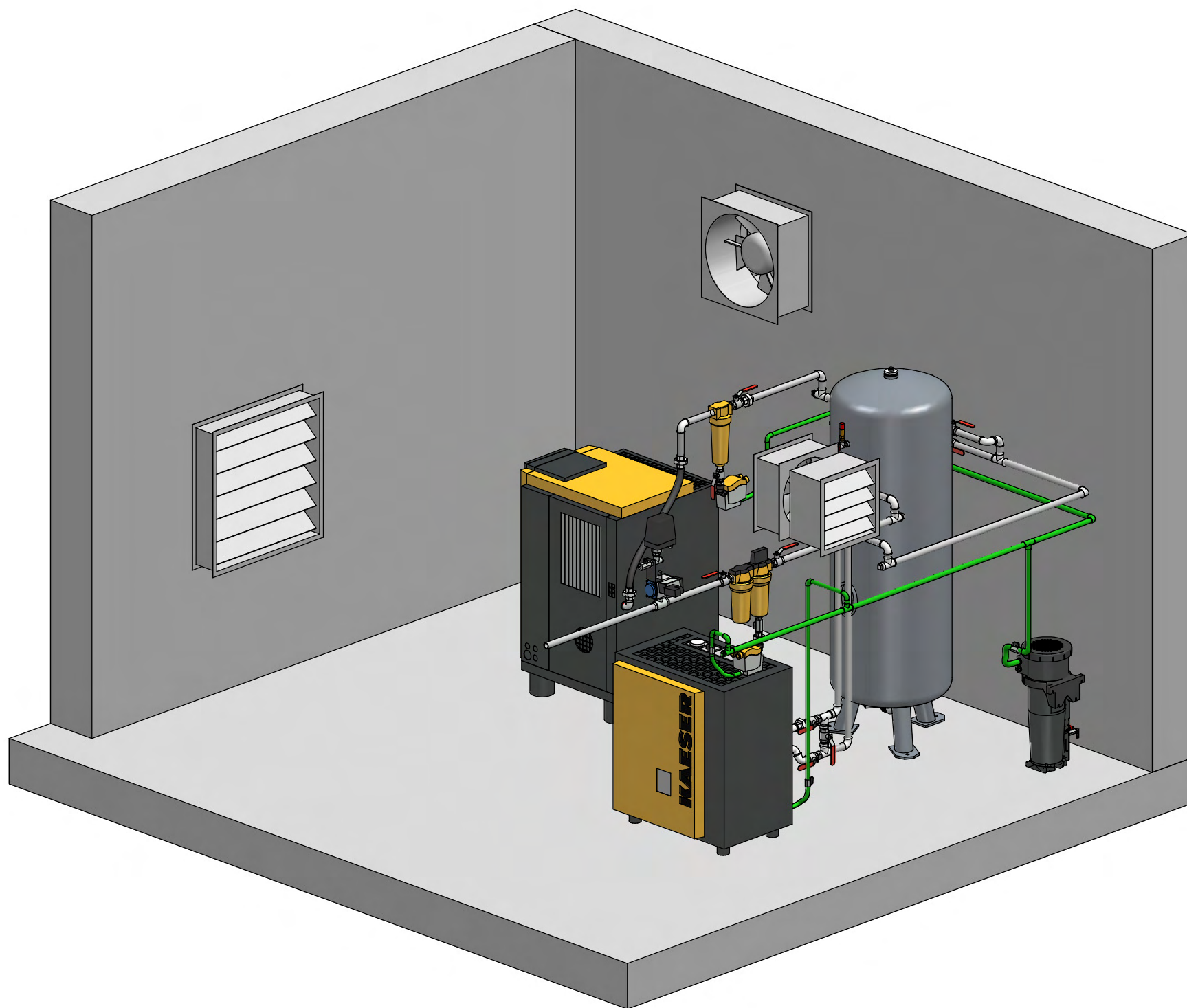
Die Zeichnung bleibt unser ausschließliches Eigentum. Sie wird nur zu dem vereinbarten Zweck anvertraut und darf zu keinem anderen Zweck verwendet werden. Kopien oder sonstige Vervielfältigungen einschließlich Speicherung, Verarbeitung oder Verbreitung unter Verwendung elektronischer Systeme dürfen nur zu dem vereinbarten Zweck angefertigt werden. Weder Original noch Vervielfältigungen dürfen Dritten ausgehändigt oder in sonstiger Weise zugänglich gemacht werden.

ATTENTION!
Minimum width of door is total width of unit + 100 mm

Safety codes on site have to be paid attention to.

Drawings remain our exclusive property. They are entrusted only for the agreed purpose. Copies or any other reproduction, including storage, treatment and dissemination by use of electronic systems must not be made for any other than the agreed purpose. Neither originals nor reproductions may be given to or made available to third parties.

Die Zeichnung bleibt unser ausschließliches Eigentum. Sie wird nur zu dem vereinbarten Zweck anvertraut und darf zu keinem anderen Zweck verwendet werden. Kopien oder sonstige Vervielfältigungen einschließlich Speicherung, Verarbeitung oder Verbreitung unter Verwendung elektronischer Systeme dürfen nur zu dem vereinbarten Zweck angefertigt werden. Weder Original noch Vervielfältigungen dürfen Dritten ausgehändigt oder in sonstiger Weise zugänglich gemacht werden.



Ambient temperature
 min.: + 3° C
 max.: + 40° C

This drawing also contains work to be done on site. The regulations of EN 1012 & VDE 0100 have to be observed; the requirements of existing operational safety ordinance and the manuals have to be considered by the operator and the employer respectively at the place of installation. The national safety and accident prevention regulations have to be observed.

The installation of a sub- assembly in terms of the pressure equipment directive 97/23/EC has to be carried out according to this directive.

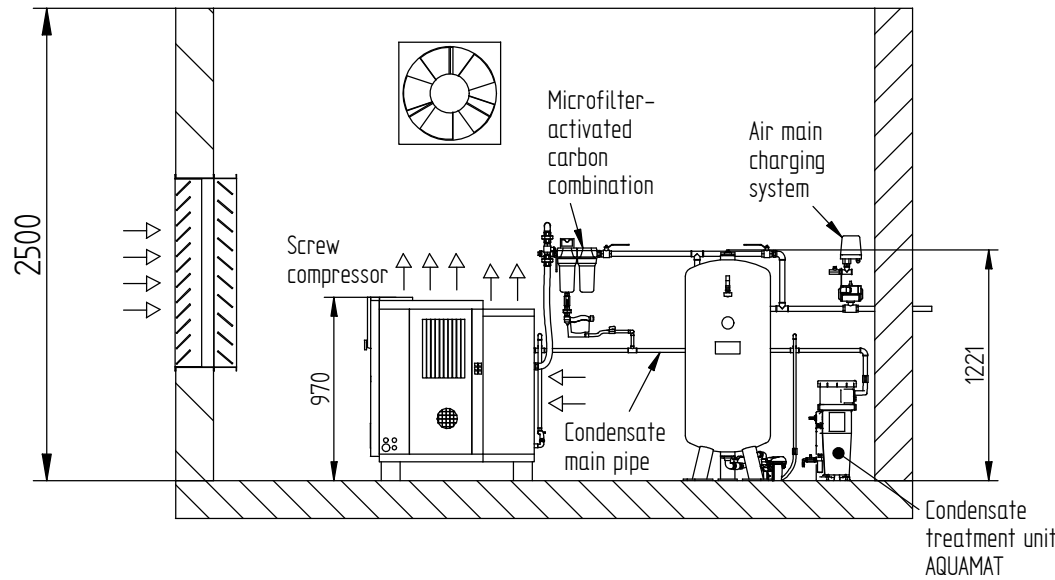
Condensate lines have to be connected to a collecting line via swan neck or are to be fed to the oil/water separator separately. A pressure-less drain has to be provided for.

ATTENTION!
 Minimum width of door is total width of unit + 100 mm

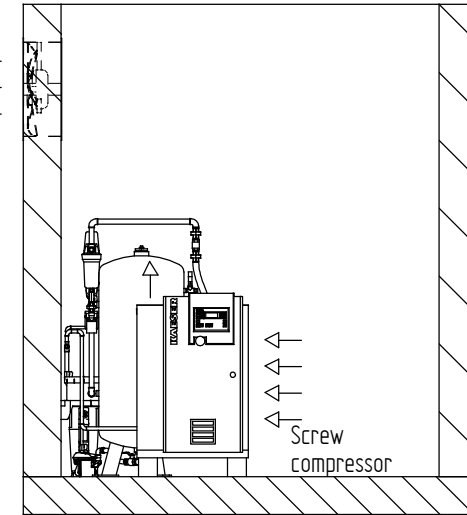
KAESER KOMPRESSOREN	P + I <input checked="" type="checkbox"/>	Scale 1:20	Date	Name	
	Inst. <input checked="" type="checkbox"/>		Drawn	02.03.2011	Langgu1
Name Sample Layout sketch 1x SX with exhaust air fan			Checked	02.03.2011	Ernst
			Plan No.	LYMU0002900e	
			Page	4 of 4	

Section A-A

Section B-B

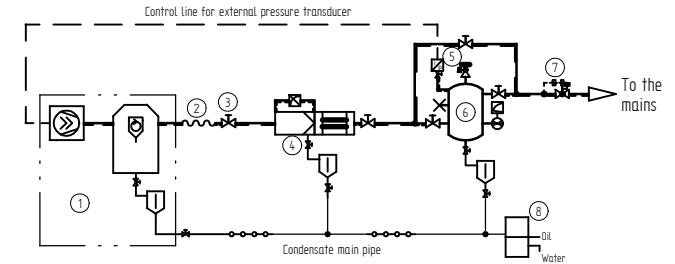
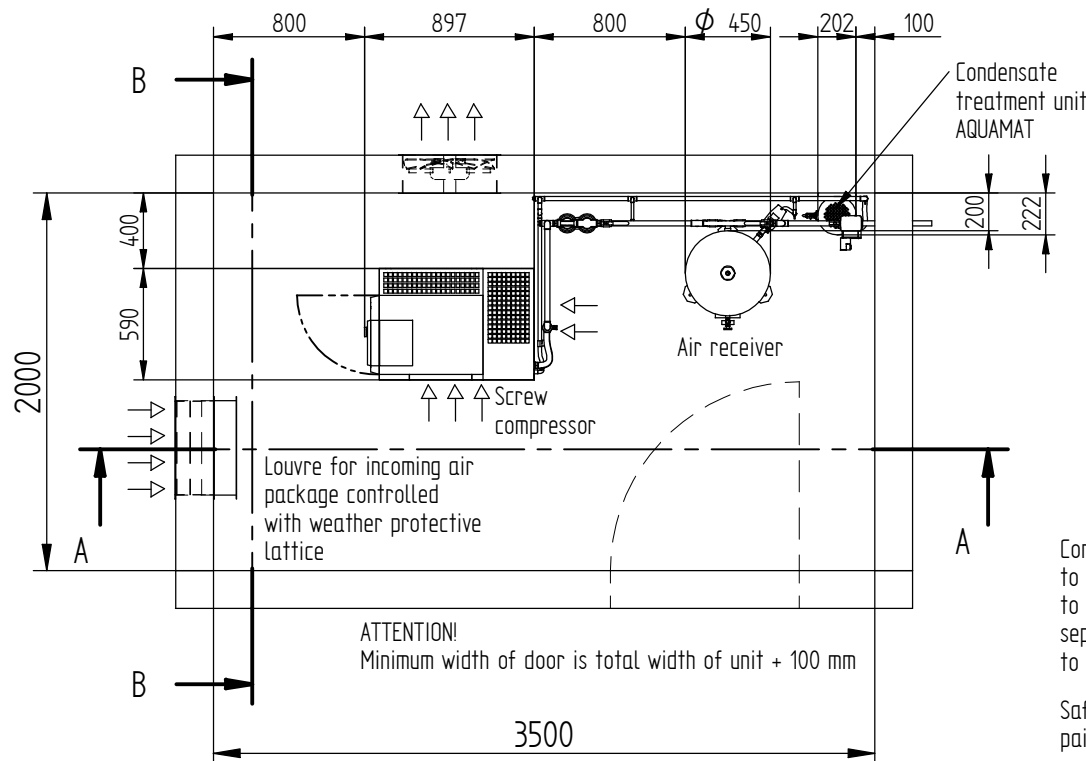


Air exhaust fan
thermostatically
controlled



Drawings remain our exclusive property. They are intended only for the agreed purpose. Copy or any other reproduction, including storage, treatment and dissemination by use of electronic systems may not be made for any other than the agreed purpose. Neither originals nor reproductions may be given to or made available to third parties.

Die Zeichnung bleibt unser ausschließliches Eigentum. Sie wird nur zu dem vereinbarten Zweck anvertraut und darf zu keinem anderen Zweck verwendet werden. Kopien oder sonstige Vervielfältigungen einschließlich Speicherung, Verarbeitung oder Drucken, auch Vervielfältigungsarbeiten für den Ausgabedruck, oder die sonstigen, weder ausdrücklich gestattet werden.



Legend

- 1 Screw compressor with integrated refrigeration dryer
- 2 Hose Line
- 3 Ball valve
- 4 Microfilter- activated carbon combination
- 5 Pressure transducer
- 6 Air receiver
- 7 Air main charging system
- 8 Condensate treatment unit

Ambient temperature
min.: + 3° C
max.: + 40° C

Compressor-model	Compressed air connection	Air entrance aperture m ² free cross section per unit	Incomming air volume m ³ /h per unit	Air exhaust fan m ³ /h	Minimum air receiver capacity l	ECO- DRAIN	Microfilter-activated carbon combination model	Compressed air connection	Condensate treatment unit AQUAMAT
SX 3 T	G 3/4	0,2	1500	1500	150	31	FFG 6- D	R 3/8	CF 3
SX 4 T	G 3/4	0,2	1700	1700	150	31	FFG 6- D	R 3/8	CF 3
SX 6 T	G 3/4	0,2	2100	2100	150	31	FFG 6- D	R 3/8	CF 3
SX 8 T	G 3/4	0,25	2600	2600	150	31	FFG 10- D	R 1/2	CF 3

Condensate lines have to be connected to a collecting line via swan neck or are to be fed to the oil/water separator separately. A pressure-less drain has to be provided for.

Safety codes on site have to be paid attention to.

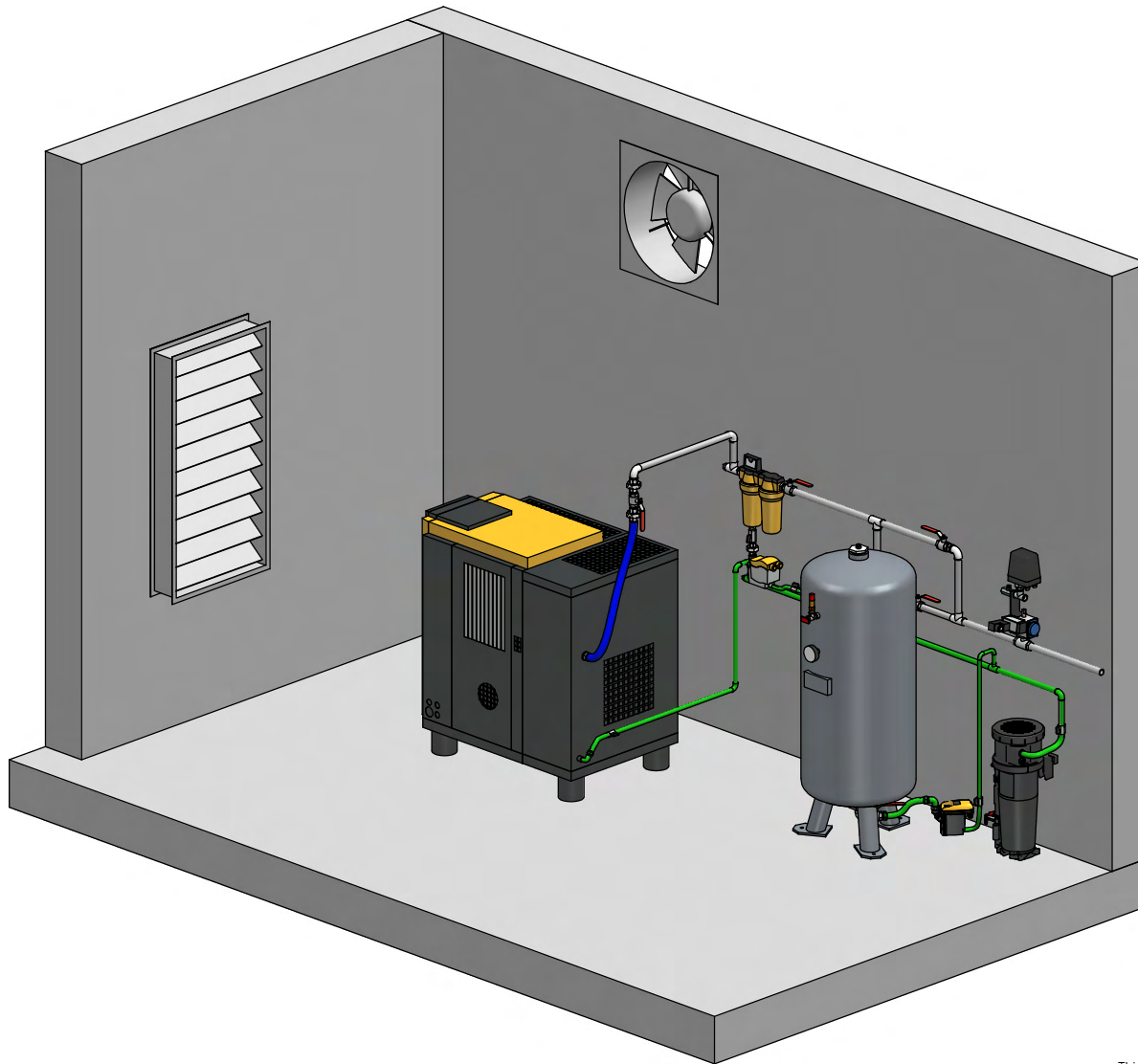
This drawing also contains work to be done on site. The regulations of EN 1012 & VDE 0100 have to be observed, the requirements of existing operational safety ordinance and the manuals have to be considered by the operator and the employer respectively at the place of installation. The national safety and accident prevention regulations have to be observed.

The installation of a sub-assembly in terms of the pressure equipment directive 97/23/EC has to be carried out according to this directive.

KAESER KOMPRESSOREN	P + I <input checked="" type="checkbox"/> Inst. <input checked="" type="checkbox"/>	Scale	1:20	Date	01.12.2009	Name	bünzler1
		Drawn	01.12.2009	Checked	01.12.2009	Ernst	
Name: Sample layout sketch 1x SX T with exhaust air fan			Plan No. LYMU0003600e		Page 1 of 2		

Drawings remain our exclusive property. They are entrusted only for the agreed purpose. Copies or any other reproduction, including storage, treatment and dissemination by use of electronic systems must not be made for any other than the agreed purpose. Neither originals nor reproductions may be given to or made available to third parties.

Die Zeichnung bleibt unser ausschließliches Eigentum. Sie wird nur zu dem vereinbarten Zweck anvertraut und darf zu keinem anderen Zweck verwendet werden. Kopien oder sonstige Vervielfältigungen einschließlich Speicherung, Verarbeitung oder Verbreitung unter Verwendung elektronischer Systeme dürfen nur zu dem vereinbarten Zweck angefertigt werden. Weder Original noch Vervielfältigungen dürfen Dritten ausleihend oder in sonstiger Weise zugänglich gemacht werden.



Ambient temperature
 min.: + 3° C
 max.: + 40° C

Safety codes on site have to be paid attention to.

Condensate lines have to be connected to a collecting line via swan neck or are to be fed to the oil/water separator separately. A pressure-less drain has to be provided for.

ATTENTION!

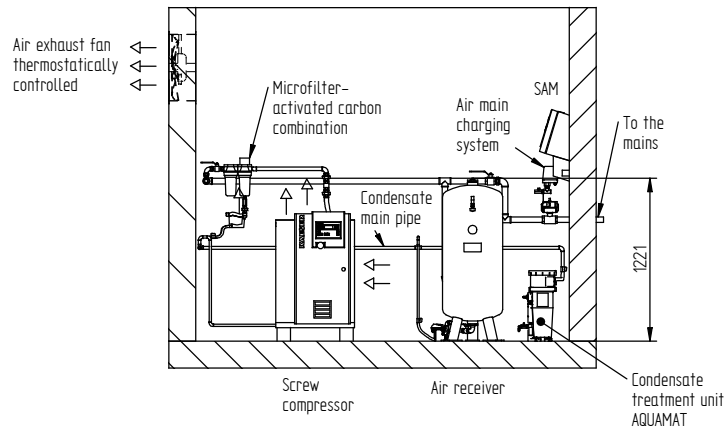
Minimum width of door is total width of unit + 100 mm

This drawing also contains work to be done on site. The regulations of EN 1012 & VDE 0100 have to be observed, the requirements of existing operational safety ordinance and the manuals have to be considered by the operator and the employer respectively at the place of installation. The national safety and accident prevention regulations have to be observed.

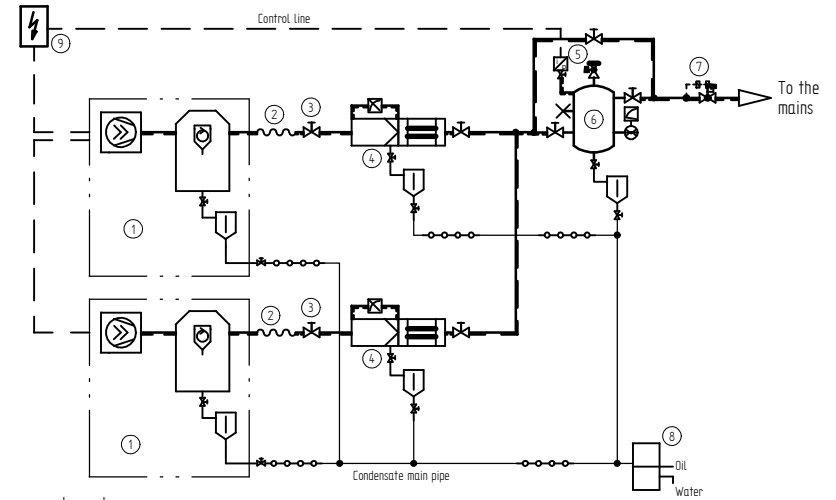
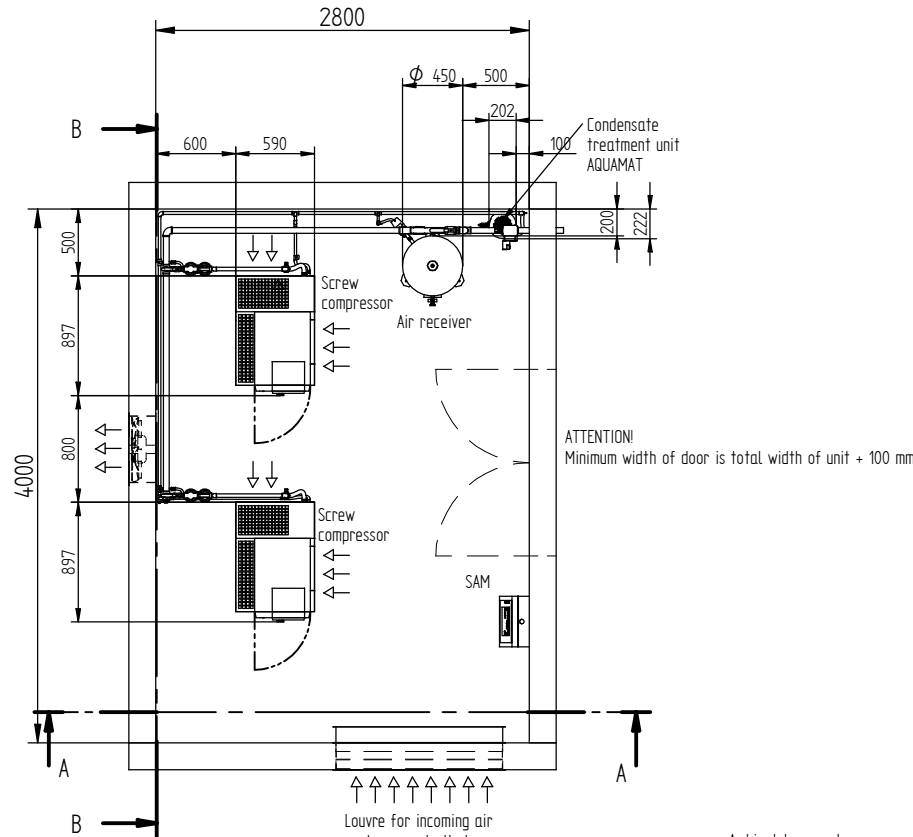
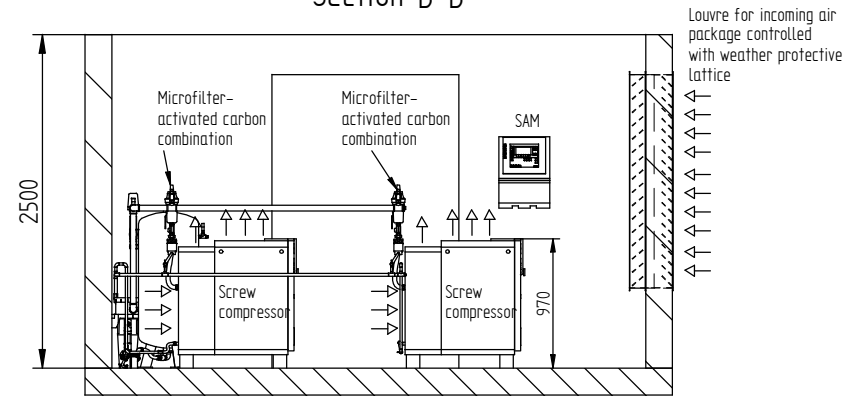
The installation of a sub-assembly in terms of the pressure equipment directive 97/23/EC has to be carried out according to this directive.

KAESER KOMPRESSOREN	P + I	Scale 1:20	Date	Name	
	<input checked="" type="checkbox"/>		Drawn	01.12.2009	blinzier1
	Inst.		Checked	01.12.2009	Ernst
Name Sample layout sketch 1x SX T with exhaust air fan			Plan No. LYMU0003600e		
			Page 2 of 2		

Section A-A



Section B-B



Legend

- 1 Screw compressor with integrated refrigeration dryer
- 2 Hose line
- 3 Ball valve
- 4 Microfilter Activated carbon combination
- 5 Pressure transducer
- 6 Air receiver tank
- 7 Air main charging system
- 8 Condensate treatment unit
- 9 Control

Compressor model	Compressed air connection	Air entrance aperture m ² free cross section per unit	Incoming air volume m ³ /h per unit	Air exhaust fan m ³ /h	Minimum air receiver capacity l	ECO- DRAIN	Microfilter-activated carbon combination model	Compressed air connection	Condensate treatment unit AQUAMAT
SX 3 T	G 3/4	0,2	1500	3000	150	31	FFG 6- D	R 3/8	CF 3
SX 4 T	G 3/4	0,2	1700	3400	150	31	FFG 6- D	R 3/8	CF 3
SX 6 T	G 3/4	0,2	2100	4200	150	31	FFG 6- D	R 3/8	CF 3
SX 8 T	G 3/4	0,25	2600	5200	150	31	FFG 10- D	R 1/2	CF 3

This drawing also contains work to be done on site. The regulations of EN 1012 & VDE 0100 have to be observed; the requirements of existing operational safety evidence and the measures have to be considered by the operator and the employer respectively at the place of installation. The national safety and accident prevention regulations have to be observed.

The installation of a sub-assembly in terms of the pressure equipment directive 97/23/EC has to be carried out according to this directive.

Ambient temperature
min. + 3° C
max. + 40° C

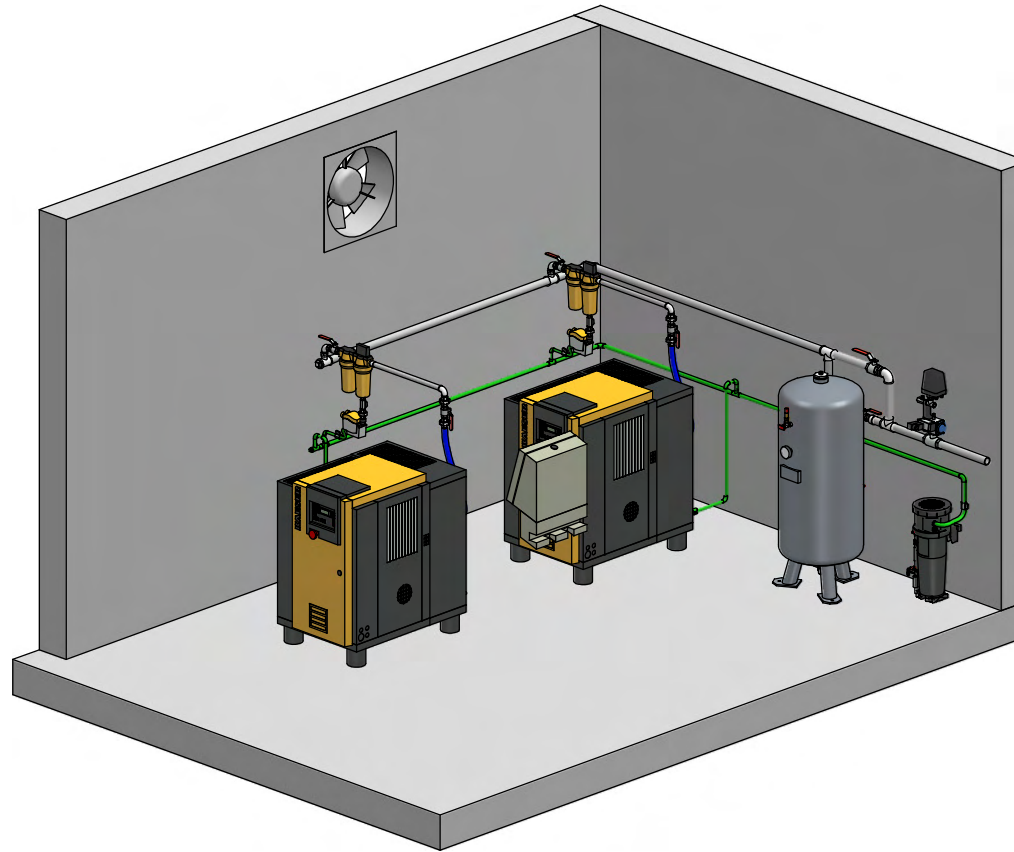
Safety codes on site have to be paid attention to.

Condensate lines have to be connected to a collecting line via swan neck or are to be fed to the oil/water separator separately. A pressure-less drain has to be provided for.

KAESER KOMPRESSOREN	<input checked="" type="checkbox"/> Scale 1:20	<input checked="" type="checkbox"/> Date 19.03.2010	<input checked="" type="checkbox"/> Name standard1
	Name Sample layout sketch 2x SX T with exhaust air fan	<input checked="" type="checkbox"/> Checked 19.03.2010	<input checked="" type="checkbox"/> Job No. LYM0003800e

Drawings remain our exclusive property. They are intended only for the agreed purpose. Copy or any other reproduction, including storage, treatment and dissemination by use of electronic systems may not be made for any other than the agreed purpose. Neither originals nor reproductions may be given to or made available to third parties.

Die Zeichnung bleibt unser ausschließliches Eigentum. Sie wird nur zu dem vereinbarten Zweck anvertraut und darf zu keinem anderen Zweck verwendet werden. Kopien oder sonstige Vervielfältigungen einschließlich Speicherung, Verarbeitung oder Verbreitung durch elektronische Systeme sind ohne unsere schriftliche Genehmigung nicht zulässig. Weder Original noch Vervielfältigungen dürfen Dritten ausgestellt oder in sonstiger Weise zugänglich gemacht werden.



Safety codes on site have to be paid attention to.

ATTENTION!
Minimum width of door is total width of unit + 100 mm

Condensate lines have to be connected to a collecting line via swan neck or are to be fed to the oil/water separator separately. A pressure-less drain has to be provided for.

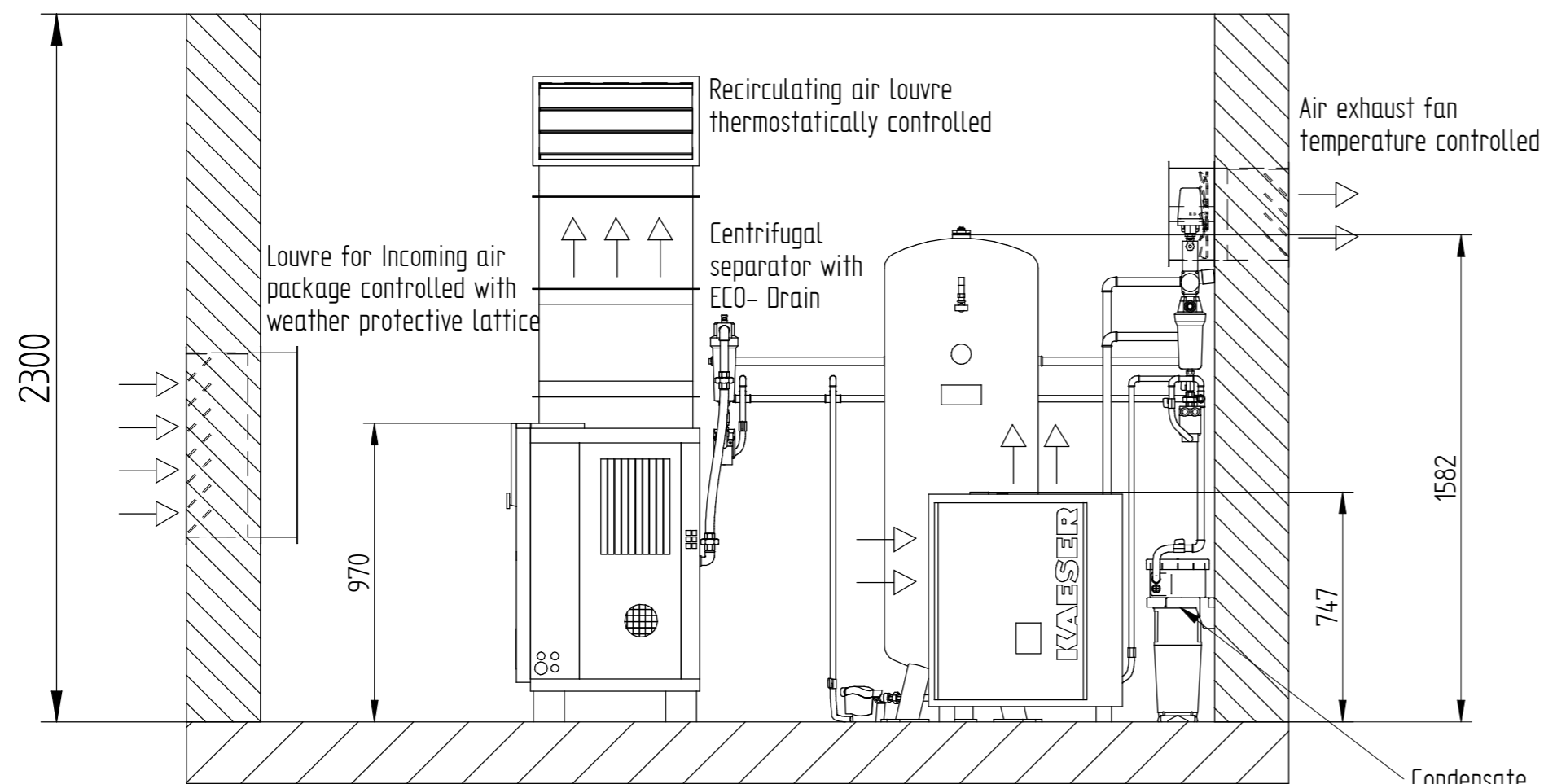
Ambient temperature
min.: + 3° C
max.: + 40° C

This drawing also contains work to be done on site. The regulations of EN 1012 & VDE 0100 have to be observed, the requirements of existing operational safety ordinance and the manuals have to be considered by the operator and the employer respectively at the place of installation. The national safety and accident prevention regulations have to be observed.

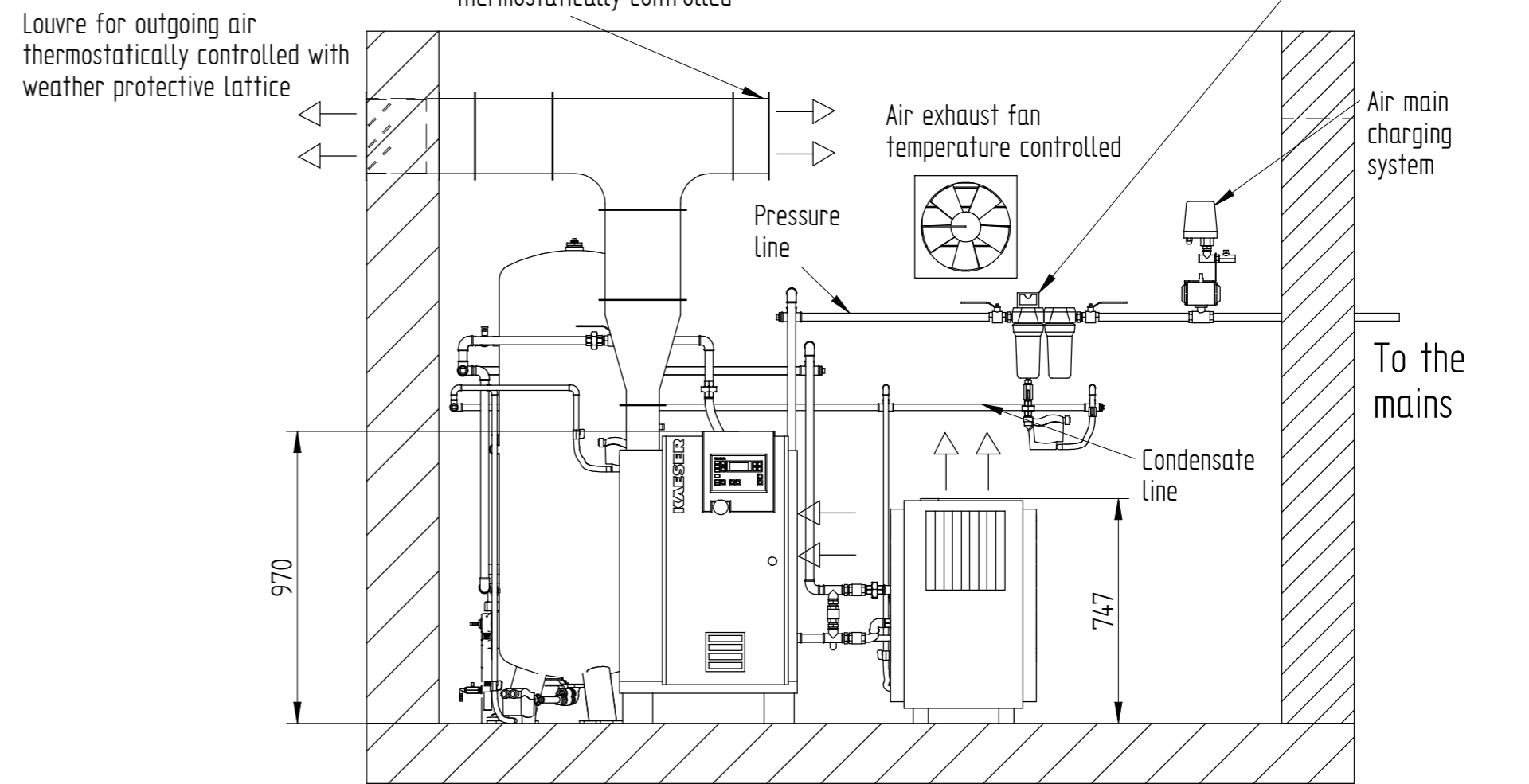
The installation of a sub-assembly in terms of the pressure equipment directive 97/23/EC has to be carried out according to this directive.

KAESER KOMPRESSOREN	<table border="1"> <tr> <td>P + I</td> <td rowspan="2">Scale</td> <td rowspan="2">Date</td> <td rowspan="2">Name</td> </tr> <tr> <td>Inst.</td> </tr> <tr> <td>Inst.</td> <td>1:20</td> <td>19.03.2010</td> <td>bünzler1</td> </tr> <tr> <td>Inst.</td> <td></td> <td>19.03.2010</td> <td>Jeske</td> </tr> </table>	P + I	Scale	Date	Name	Inst.	Inst.	1:20	19.03.2010	bünzler1	Inst.		19.03.2010	Jeske	Name: Sample layout sketch 2x SX T with exhaust air fan		Plan No. LYMU0003800e
		P + I				Scale	Date	Name									
Inst.																	
Inst.	1:20	19.03.2010	bünzler1														
Inst.		19.03.2010	Jeske														
			Page 2 of 2														

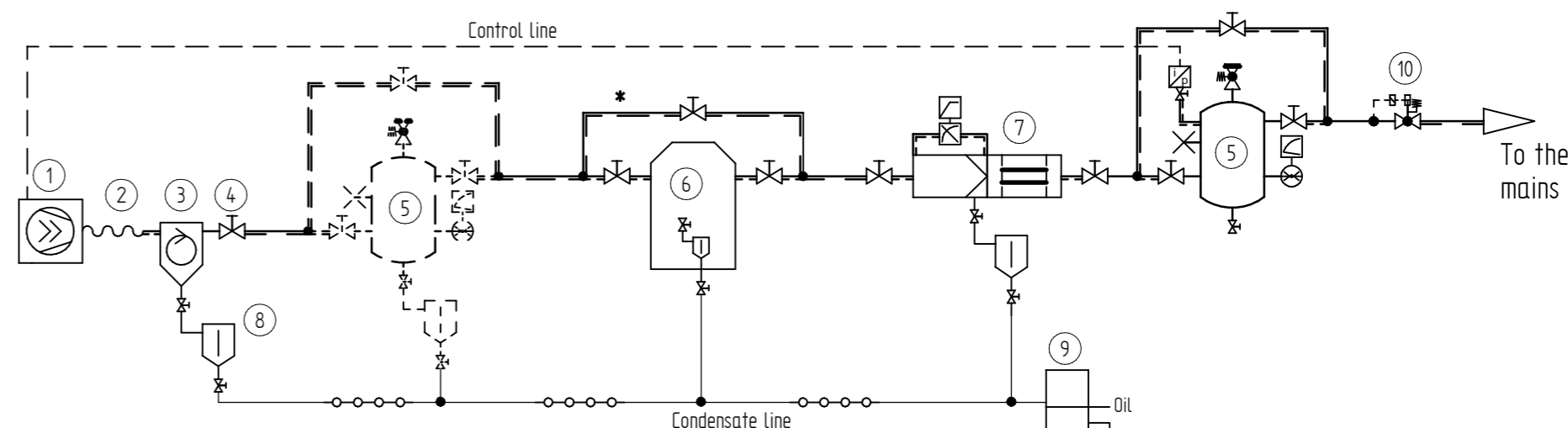
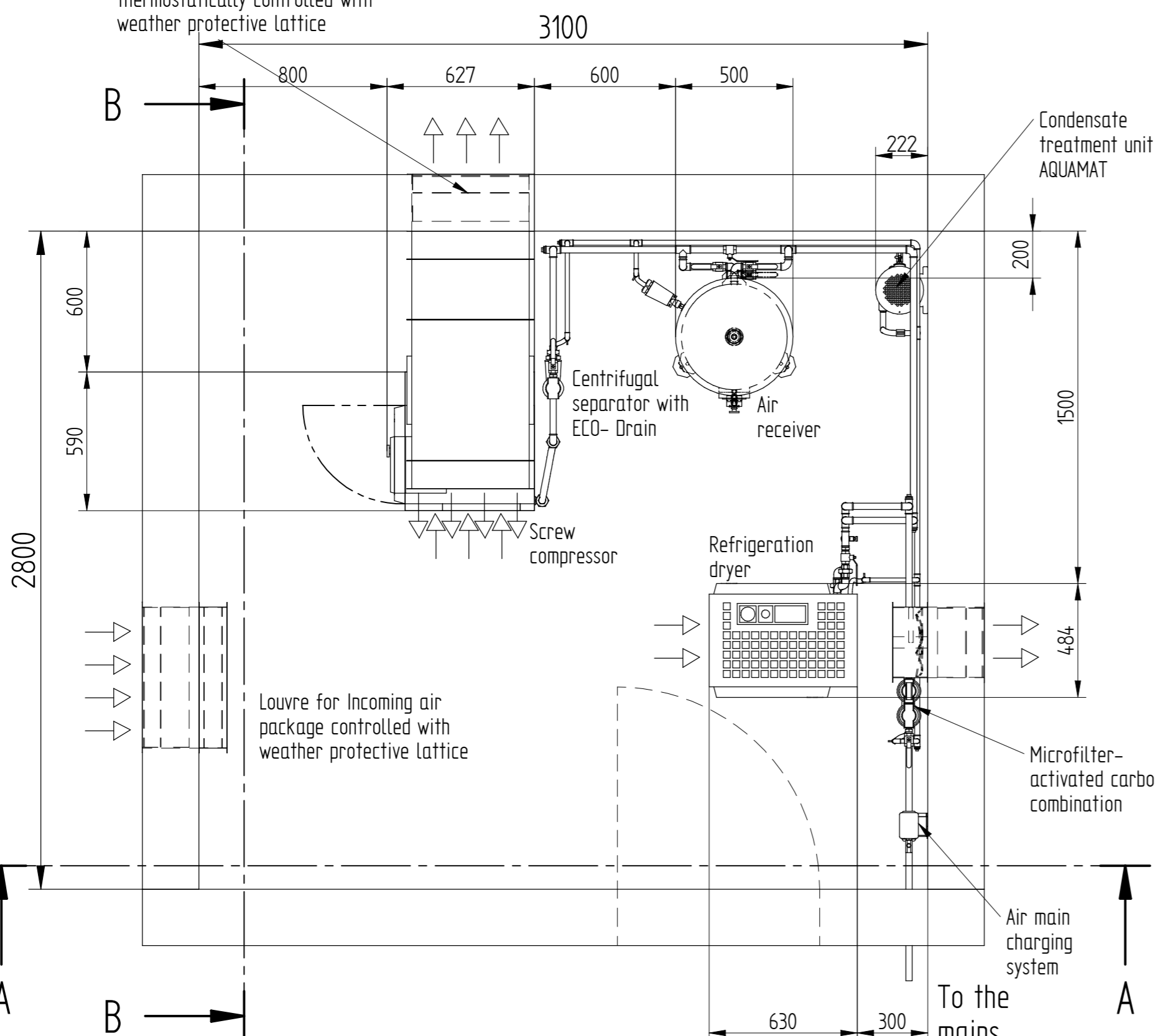
SECTION A-A



SECTION B-B



Louvre for outgoing air thermostatically controlled with weather protective lattice



- Legend
- 1 Screw compressor
 - 2 Hose line
 - 3 Centrifugal separator
 - 4 Ball valve
 - 5 Air receiver tank
 - 6 Refrigeration dryer
 - 7 Microfilter Activated Carbon combination
 - 8 Automatic condensate drain
 - 9 Condensate Treatment unit
 - 10 Air main charging system

* Bypass lines should not be fitted on standby units or when 100 % compressed air quality is required.
The requirements of items 3 and 5 should be chosen according operating conditions.

Compressor-model	Compressed air connection	Air entrance aperture m ² free cross section per unit	Incoming air volume m ³ /h per unit	Air exhaust duct dimensions mm	Centrifugal separator model	Compressed air connection	ECO-DRAIN	Minimum air receiver capacity l	ECO-DRAIN	Refrigeration dryer model **	Compressed air connection	Air entrance aperture m ² free cross section per unit	Incoming air volume m ³ /h per unit	Microfilter-activated carbon combination model	Compressed air connection	Condensate treatment unit AQUAMAT
SX 3	G 3/4	0,2	1050	500 X 250	ZK 01	G 3/4	31	150	31	TA 5	G 3/4	0,1	650	FFG 6- D	R 3/8	CF 3
SX 4	G 3/4	0,2	1050	500 X 250	ZK 01	G 3/4	31	150	31	TA 5	G 3/4	0,1	650	FFG 6- D	R 3/8	CF 3
SX 6	G 3/4	0,2	1050	500 X 250	ZK 01	G 3/4	31	250	31	TA 5	G 3/4	0,1	650	FFG 6- D	R 3/8	CF 3
SX 8	G 3/4	0,2	1350	500 X 250	ZK 01	G 3/4	31	250	31	TA 8	G 3/4	0,1	650	FFG 10- D	R 1/2	CF 3

** Designed for reference terms DIN/ ISO 7183 Option A

Ambient temperature
min.: + 3° C
max.: + 40° C

Condensate lines have to be connected to a collecting line via swan neck or are to be fed to the oil/water separator separately. A pressure-less drain has to be provided for.

This drawing also contains work to be done on site. The regulations of EN 1012 & VDE 0100 have to be observed, the requirements of existing operational safety ordinance and the manuals have to be considered by the operator and the employer respectively at the place of installation. The national safety and accident prevention regulations have to be observed.

The installation of a sub- assembly in terms of the pressure equipment directive 97/23/EC has to be carried out according to this directive.

KAESER KOMPRESSOREN	P + I	Scale	Date	Name
	Inst.	1:20	01.03.2011	Langgu1
Name: Sample Layout sketch		Checked	01.03.2011	Ernst
1x SX with exhaust duct		Plan No.	LYMU0003100e	
		Page 3 of 4		

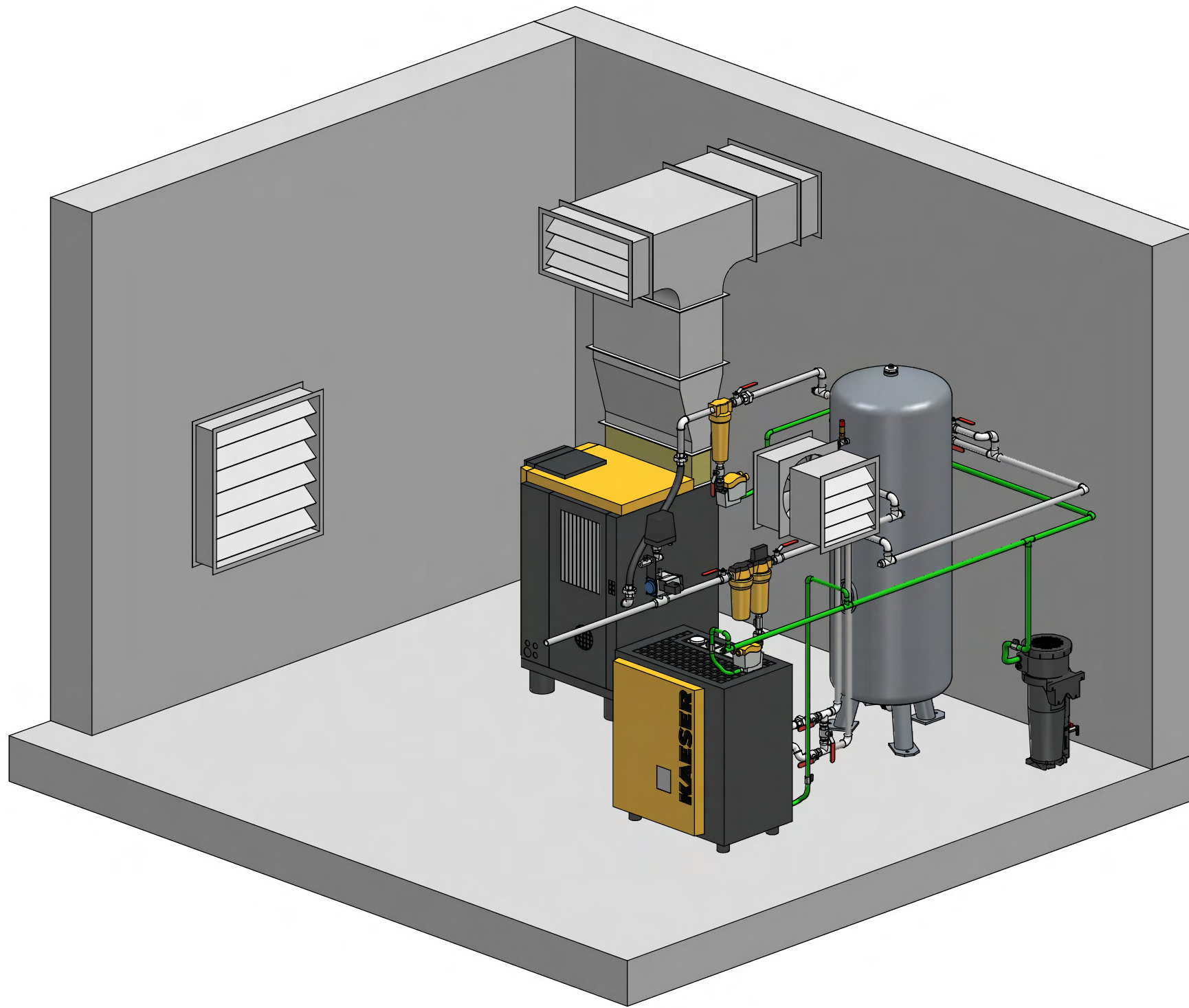
Drawings remain our exclusive property. They are entrusted only for the agreed purpose. Copies or any other reproduction, including storage, treatment and dissemination by use of electronic systems must not be made for any other than the agreed purpose. Neither originals nor reproductions may be given to or made available to third parties.

ATTENTION!
Minimum width of door is total width of unit + 100 mm

Safety codes on site have to be paid attention to.

Drawings remain our exclusive property. They are entrusted only for the agreed purpose. Copies or any other reproduction, including storage, treatment and dissemination by use of electronic systems must not be made for any other than the agreed purpose. Neither originals nor reproductions may be given to or made available to third parties.

Die Zeichnung bleibt unser ausschließliches Eigentum. Sie wird nur zu dem vereinbarten Zweck anvertraut und darf zu keinem anderen Zweck verwendet werden. Kopien oder sonstige Vervielfältigungen einschließlich Speicherung, Verarbeitung oder Verbreitung unter Verwendung elektronischer Systeme dürfen nur zu dem vereinbarten Zweck angefertigt werden. Weder Original noch Vervielfältigungen dürfen Dritten ausgehändigt oder in sonstiger Weise zugänglich gemacht werden.



Ambient temperature
 min.: + 3° C
 max.: + 40° C

This drawing also contains work to be done on site. The regulations of EN 1012 & VDE 0100 have to be observed; the requirements of existing operational safety ordinance and the manuals have to be considered by the operator and the employer respectively at the place of installation. The national safety and accident prevention regulations have to be observed.

The installation of a sub- assembly in terms of the pressure equipment directive 97/23/EC has to be carried out according to this directive.

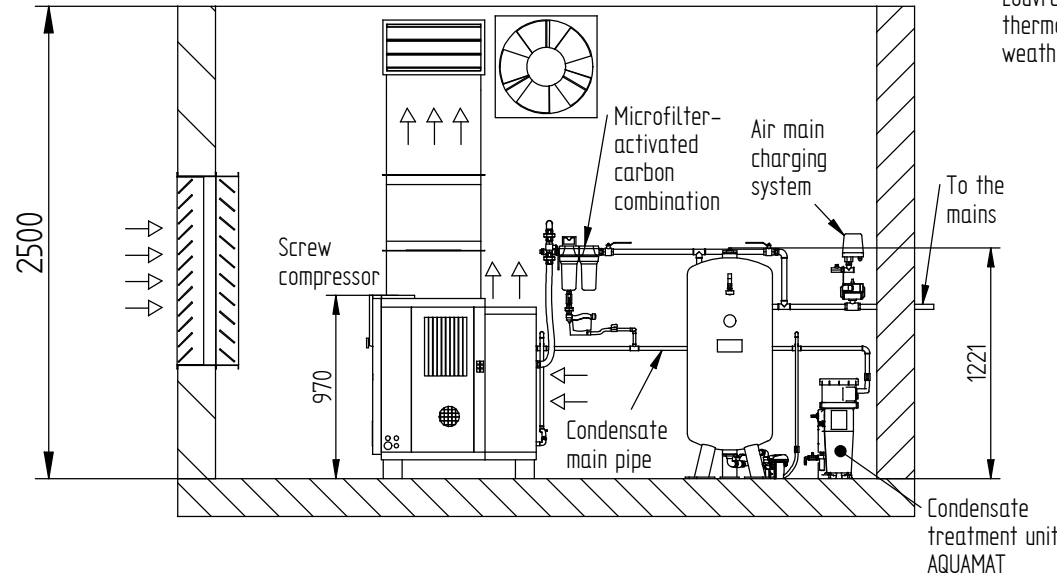
Condensate lines have to be connected to a collecting line via swan neck or are to be fed to the oil/water separator separately. A pressure-less drain has to be provided for.

ATTENTION!
 Minimum width of door is total width of unit + 100 mm

KAESER KOMPRESSOREN	P + I <input checked="" type="checkbox"/>	Scale 1:20	Date	Name
	Inst. <input checked="" type="checkbox"/>		Drawn 01.03.2011	Langgu1
Name Sample Layout sketch 1x SX with exhaust duct			Checked 01.03.2011	Ernst
			Plan No. LYMU0003100e	
			Page 4 of 4	

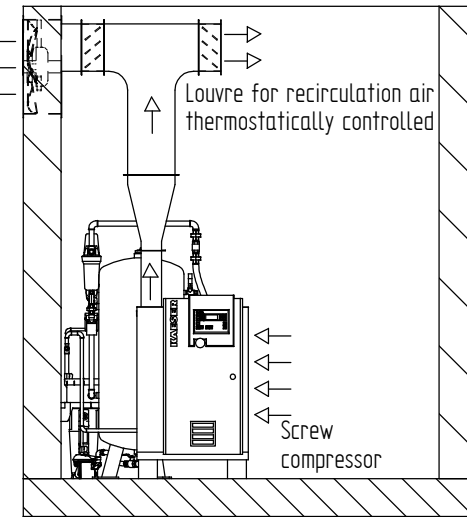
Section A-A

Section B-B



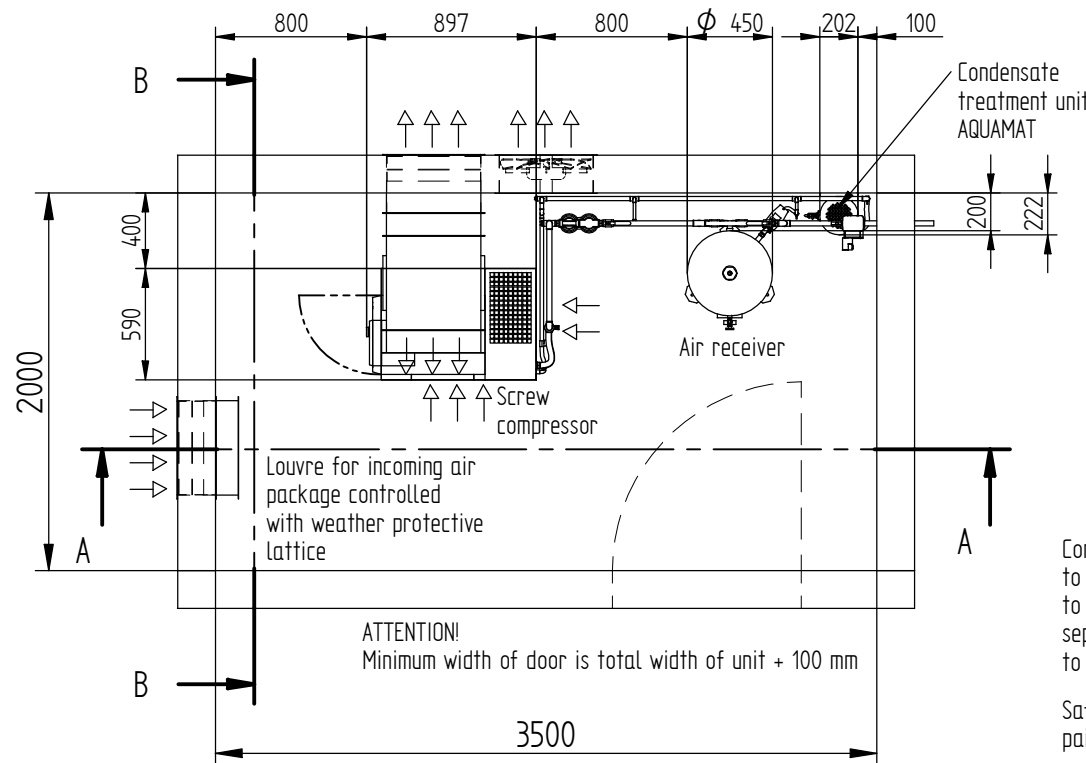
Louvre for outgoing air
thermostatically controlled with
weather protective lattice

Air exhaust fan
thermostatically
controlled

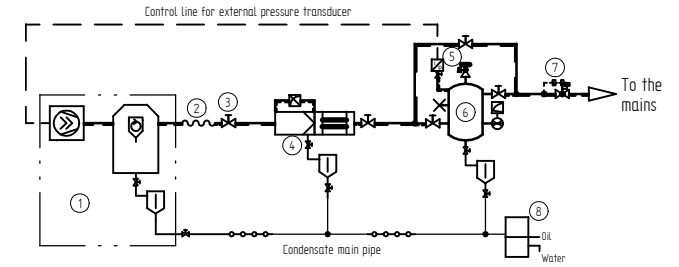


Drawings remain our exclusive property. They are intended only for the agreed purpose. Copies or any other reproduction, including storage, treatment and dissemination by use of electronic systems may not be made for any other than the agreed purpose. Neither originals nor reproductions may be given to or made available to third parties.

Die Zeichnung bleibt unser ausschließliches Eigentum. Sie wird nur zu dem vereinbarten Zweck anvertraut und darf zu keinem anderen Zweck verwendet werden. Kopien oder sonstige Vervielfältigungen einschließlich Speicherung, Verarbeitung oder Drucken, auch Vervielfältigungen durch elektronische Systeme, sind ohne unsere Genehmigung oder in sonstiger Weise ausdrücklich gestattet werden.



ATTENTION!
Minimum width of door is total width of unit + 100 mm



Legend

- 1 Screw compressor with integrated refrigeration dryer
- 2 Hose Line
- 3 Ball valve
- 4 Microfilter- activated carbon combination
- 5 Pressure transducer
- 6 Air receiver
- 7 Air main charging system
- 8 Condensate treatment unit

Ambient temperature
min.: + 3° C
max.: + 40° C

Compressor model	Compressed air connection	Air entrance aperture m ² free cross section per unit	Incoming air volume m ³ /h per unit	Air exhaust duct dimensions mm	Permissible overall pressure loss for exhaust air duct Ap	Exhaust air fan for each dryer m ³ /h	Minimum air receiver capacity l	ECO- DRAIN	Microfilter-activated carbon combination model	Compressed air connection	Condensate treatment unit AQUAMAT
SX 3 T	G 3/4	0,2	1500	500 X 150	30	540	150	31	FFG 6- D	R 3/8	CF 3
SX 4 T	G 3/4	0,2	1500	500 X 150	30	540	150	31	FFG 6- D	R 3/8	CF 3
SX 6 T	G 3/4	0,2	1700	500 X 150	30	780	150	31	FFG 6- D	R 3/8	CF 3
SX 8 T	G 3/4	0,25	2000	500 X 150	30	780	150	31	FFG 10- D	R 1/2	CF 3

Condensate lines have to be connected to a collecting line via swan neck or are to be fed to the oil/water separator separately. A pressure-less drain has to be provided for.

Safety codes on site have to be paid attention to.

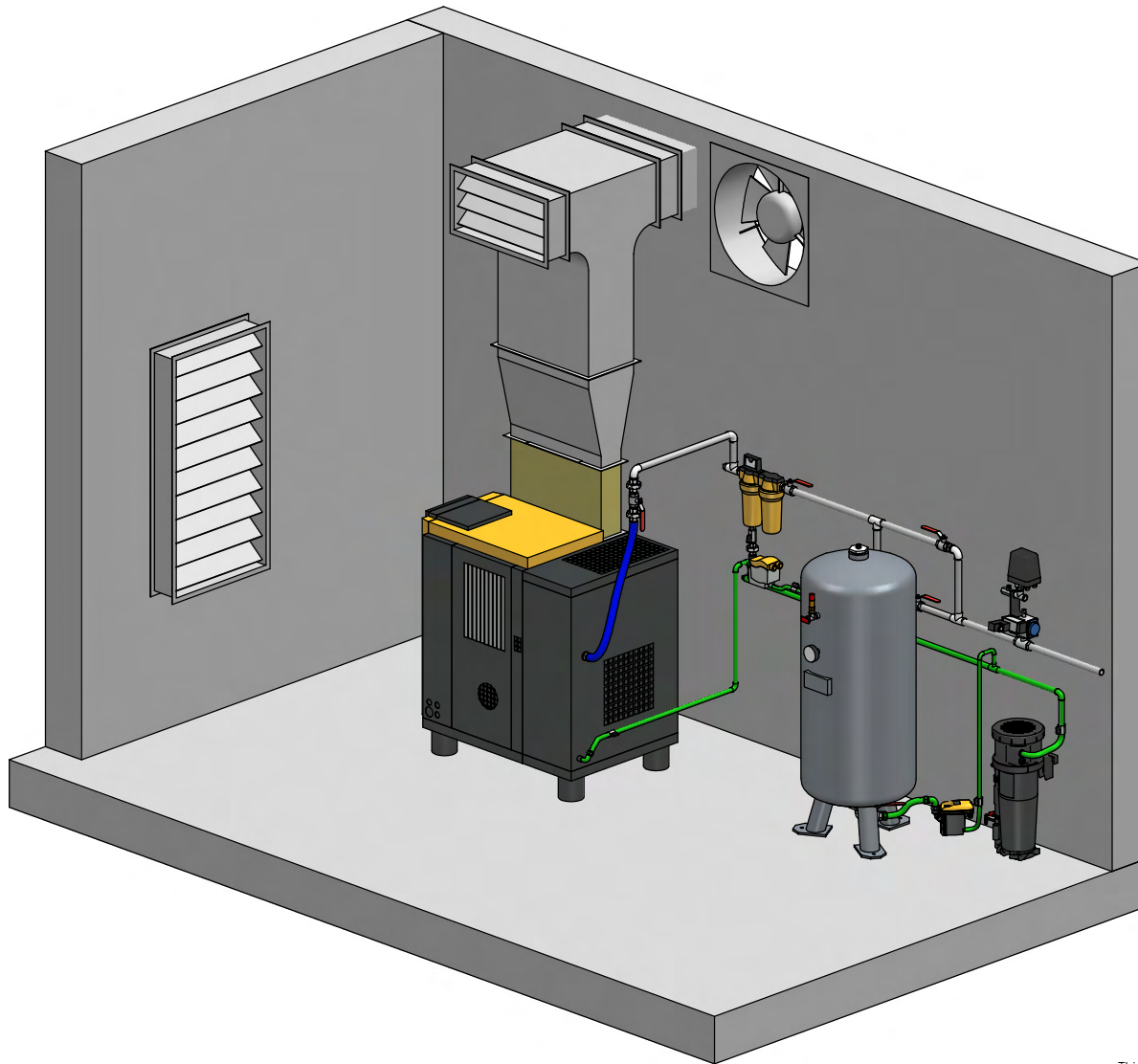
This drawing also contains work to be done on site. The regulations of EN 1012 & VDE 0100 have to be observed, the requirements of existing operational safety ordinance and the manuals have to be considered by the operator and the employer respectively at the place of installation. The national safety and accident prevention regulations have to be observed.

The installation of a sub- assembly in terms of the pressure equipment directive 97/23/EC has to be carried out according to this directive.

KAESER KOMPRESSOREN	P + I Inst.	Scale 1:20	Date	Name
			Drawn 01.12.2009 blünzler1	Name Sample layout sketch 1x SX T with exhaust air duct
Name Sample layout sketch 1x SX T with exhaust air duct			Checked 01.12.2009 Ernst	Plan No. LYMU0003700e
			Page 1 of 2	

Drawings remain our exclusive property. They are entrusted only for the agreed purpose. Copies or any other reproduction, including storage, treatment and dissemination by use of electronic systems must not be made for any other than the agreed purpose. Neither originals nor reproductions may be given to or made available to third parties.

Die Zeichnung bleibt unser ausschließliches Eigentum. Sie wird nur zu dem vereinbarten Zweck anvertraut und darf zu keinem anderen Zweck verwendet werden. Kopien oder sonstige Vervielfältigungen einschließlich Speicherung, Verarbeitung oder Verbreitung unter Verwendung elektronischer Systeme dürfen nur zu dem vereinbarten Zweck angefertigt werden. Weder Original noch Vervielfältigungen dürfen Dritten ausleihend oder in sonstiger Weise zugänglich gemacht werden.



Ambient temperature
 min.: + 3° C
 max.: + 40° C

Safety codes on site have to be paid attention to.

Condensate lines have to be connected to a collecting line via swan neck or are to be fed to the oil/water separator separately. A pressure-less drain has to be provided for.

ATTENTION!
 Minimum width of door is total width of unit + 100 mm

This drawing also contains work to be done on site. The regulations of EN 1012 & VDE 0100 have to be observed, the requirements of existing operational safety ordinance and the manuals have to be considered by the operator and the employer respectively at the place of installation. The national safety and accident prevention regulations have to be observed.

The installation of a sub-assembly in terms of the pressure equipment directive 97/23/EC has to be carried out according to this directive.

KAESER
KOMPRESSOREN

P + I
 Inst.

Scale
 1:20

	Date	Name
Drawn	01.12.2009	blinzler1
Checked	01.12.2009	Ernst

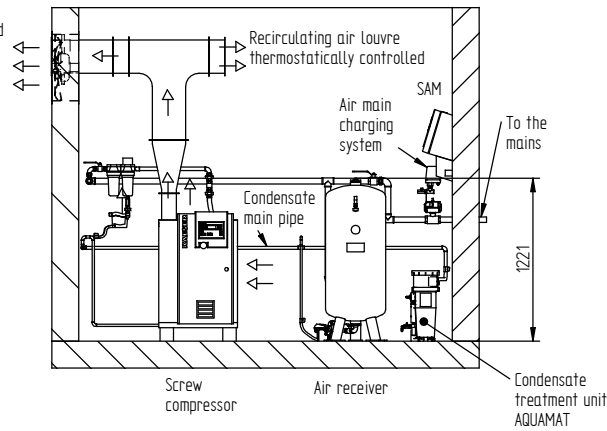
Name Sample layout sketch
 1x SX T with exhaust air duct

Plan No.
 LYMU0003700e

Page 2 of 2

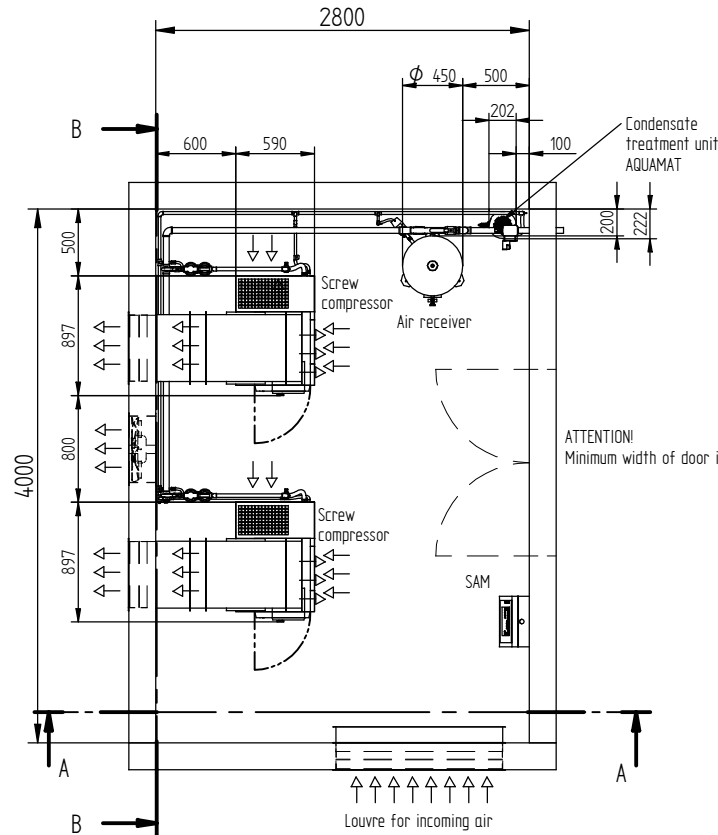
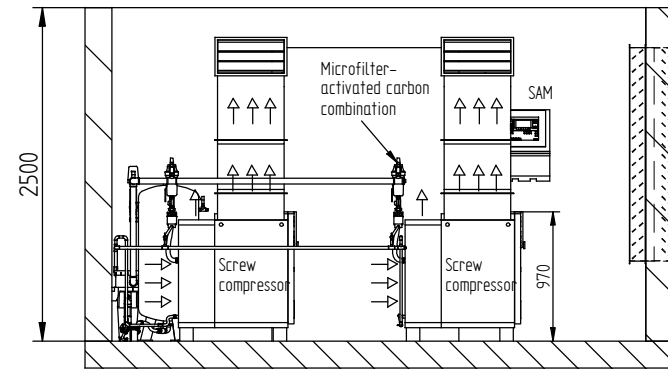
Section A-A

Louvre for outgoing air thermostatically controlled with weather protective lattice
 Air exhaust fan thermostatically controlled



Section B-B

Louvre for incoming air package controlled with weather protective lattice

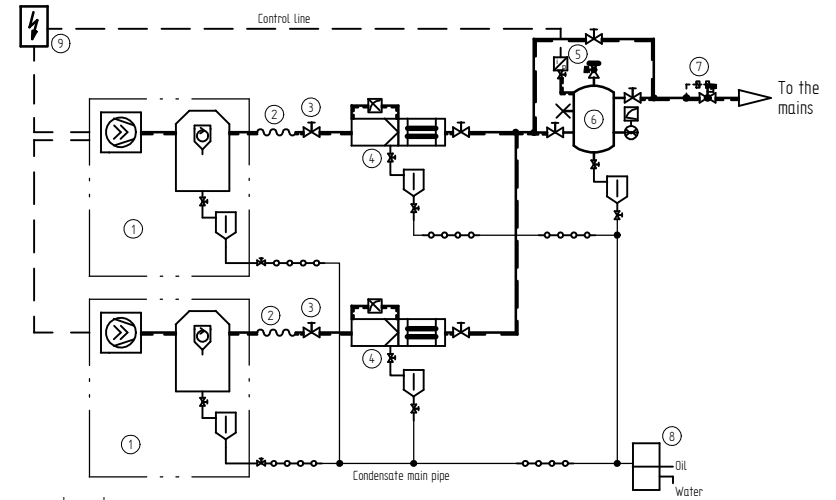


ATTENTION!
 Minimum width of door is total width of unit + 100 mm

Louvre for incoming air package controlled with weather protective lattice

Ambient temperature
 min. + 3° C
 max. + 40° C

Safety codes on site have to be paid attention to.



Legend

- 1 Screw compressor with integrated refrigeration dryer
- 2 Hose line
- 3 Ball valve
- 4 Microfilter Activated carbon combination
- 5 Pressure transducer
- 6 Air receiver tank
- 7 Air main charging system
- 8 Condensate treatment unit
- 9 Control

Compressor-model	Compressed air connection	Air entrance aperture m ² free cross section per unit	Incoming air volume m ³ /h per unit	Air exhaust duct dimensions mm	Permissible overall pressure loss for exhaust air duct Δp	Exhaust air fan for each dryer m ³ /h	Minimum air receiver capacity l	ECO- DRAIN	Microfilter-activated carbon combination model	Compressed air connection	Condensate treatment unit AQUAMAT
SX 3 T	G 3/4	0,2	1500	500 X 150	30	540	150	31	FFG 6- D	R 3/8	CF 3
SX 4 T	G 3/4	0,2	1500	500 X 150	30	540	150	31	FFG 6- D	R 3/8	CF 3
SX 6 T	G 3/4	0,2	1700	500 X 150	30	780	150	31	FFG 6- D	R 3/8	CF 3
SX 8 T	G 3/4	0,25	2000	500 X 150	30	780	150	31	FFG 10- D	R 1/2	CF 3

This drawing also contains work to be done on site. The regulations of EN 1012 & VDE 0100 have to be observed; the requirements of existing operational safety evidence and the manuals have to be considered by the operator and the employer respectively at the place of installation. The national safety and accident prevention regulations have to be observed.

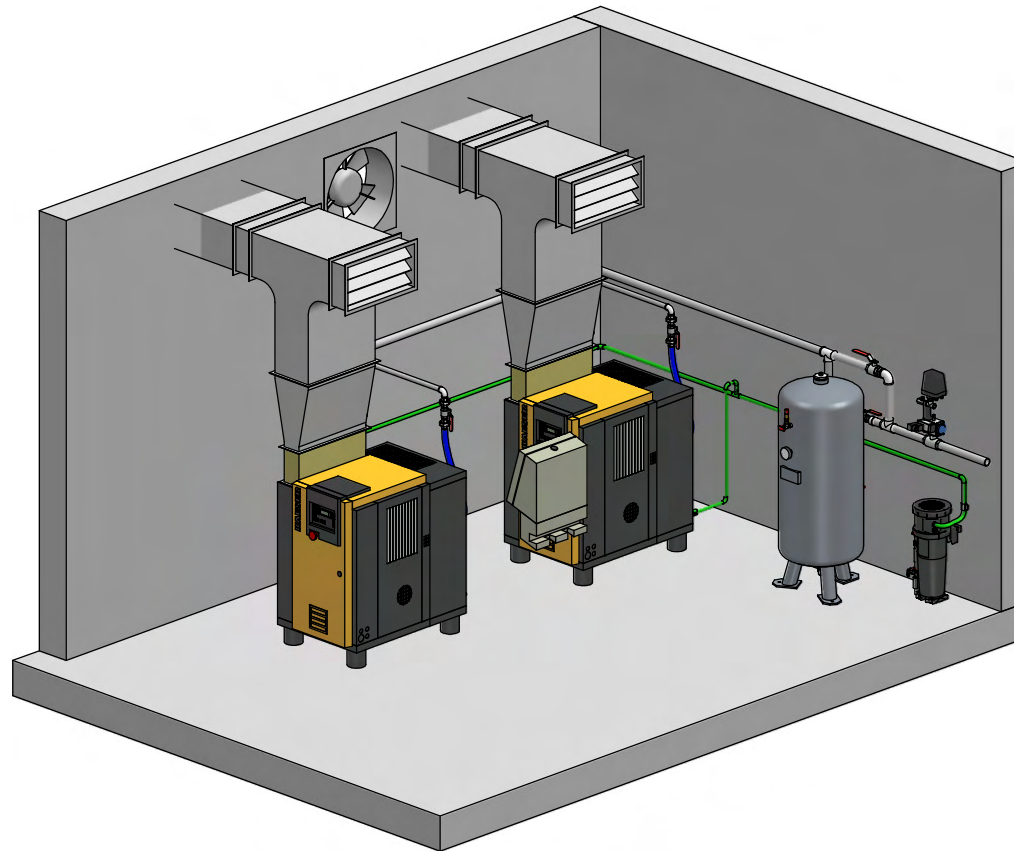
The installation of a sub-assembly in terms of the pressure equipment directive 97/23/EC has to be carried out according to this directive.

Condensate lines have to be connected to a collecting line via swan neck or are to be fed to the oil/water separator separately. A pressure-less drain has to be provided for.

KAESER KOMPRESSOREN	<input checked="" type="checkbox"/> Scale 1:20	<input checked="" type="checkbox"/> Date 19.03.2010	<input checked="" type="checkbox"/> Name standart1
	Drawn Checked 19.03.2010	Date 19.03.2010	Name jakse
Name: Sample layout sketch 2x SX T with exhaust air duct		Plan No. LYMU0003900e	
Page 1 of 2			

Drawings remain our exclusive property. They are intended only for the agreed purpose. Copies or any other reproduction, including storage, treatment and dissemination by use of electronic systems may not be made for any other than the agreed purpose. Neither originals nor reproductions may be given to or made available to third parties.

Die Zeichnung bleibt unser ausschließliches Eigentum. Sie wird nur zu dem vereinbarten Zweck anvertraut und darf zu keinem anderen Zweck verwendet werden. Kopien oder sonstige Vervielfältigungen einschließlich Speicherung, Verarbeitung oder Verbreitung durch elektronische Systeme sind ohne unsere schriftliche Genehmigung nicht zulässig. Weder Original noch Vervielfältigungen dürfen Dritten zugänglich gemacht werden.



Safety codes on site have to be paid attention to.

ATTENTION!
Minimum width of door is total width of unit + 100 mm

Condensate lines have to be connected to a collecting line via swan neck or are to be fed to the oil/water separator separately. A pressure-less drain has to be provided for.

Ambient temperature
min.: + 3° C
max.: + 40° C

This drawing also contains work to be done on site. The regulations of EN 1012 & VDE 0100 have to be observed, the requirements of existing operational safety ordinance and the manuals have to be considered by the operator and the employer respectively at the place of installation. The national safety and accident prevention regulations have to be observed.

The installation of a sub-assembly in terms of the pressure equipment directive 97/23/EC has to be carried out according to this directive.

KAESER KOMPRESSOREN	<table border="1"> <tr> <td>P + I</td> <td>Scale</td> <td>Date</td> <td>Name</td> </tr> <tr> <td>Inst.</td> <td>1:20</td> <td>19.03.2010</td> <td>bünzler1</td> </tr> <tr> <td>Inst.</td> <td></td> <td>19.03.2010</td> <td>Jeske</td> </tr> </table>	P + I	Scale	Date	Name	Inst.	1:20	19.03.2010	bünzler1	Inst.		19.03.2010	Jeske	Name: Sample layout sketch 2x SX T with exhaust air duct		Plan No. LYMU0003900e
		P + I	Scale	Date	Name											
Inst.	1:20	19.03.2010	bünzler1													
Inst.		19.03.2010	Jeske													
		Page 2 of 2														

We reserve the right to make changes in the course of development. This drawing can only be modified with CAD